

CPD Course | School of Architecture, Planning and Geomatics

Introduction to Spatial Design

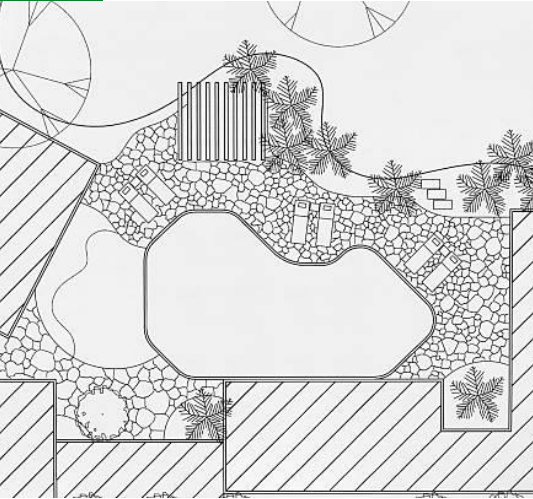
UCT, Cape Town, 22 – 26 June 2026



UNIVERSITY OF CAPE TOWN
IYUNIVESITHI YASEKAPA • UNIVERSITEIT VAN KAAPSTAD

SPES BONA

Course Overview



Introduction to Spatial Design is an intensive course held over five days and provides an experiential snapshot of the design studio and spatial design thinking required for built environment disciplines such as landscape architecture and urban design. Zoodada introduces abstraction as a design tool, employing various modes as filters or 'design machines' to learn how to communicate and represent what we see and experience in our environment in an architectural language.

This course is a whirlwind introduction to spatial design. The design process from site to programme to design development and production, is condensed into one week. The value of this course is its connection to a tangible site through which both technical and creative spatial design skills are explored and developed.

Course Topics

Form generation: form theory as well as practical prototyping, emergent forms and strategies for spatial organisation.

Place: introduces context and genius loci and engages in topographical manipulation of a site.

Site analysis: involves a practical session of measuring, drawing and reconstructing a site through plan, section, elevation and models.

Programme: students develop a brief and programme for design as well as input from examples of theory and precedent.

Design production and process: students engage in a process of design development and production of design through plan, section, elevation, 3D perspectives and models.

Representation: throughout the course students are exposed to various ways of representing and communicating spatial design ideas and narratives, including the curation of a body of work.

Course Format

Zoodada is a short introduction to architectural and landscape design that, via abstraction, first introduces Bauhaus design techniques and secondly focusses on placemaking strategies in the abandoned zoo site adjacent to UCT upper campus.

The first lesson explores form making strategies using design precedent and incorporates a series of model building exercises and learning model building techniques.

The second lesson focuses on how such strategies may form a concept design that in architecture is referred to as a parti.

On the third day we focus on place making whilst working on a steep slope. Students design using contour manipulation and earthworks and they build a site model and grade all paths on the site to create universal access.

On the fourth day we draw plans and sections and, in the afternoon learn how to produce quick hand-drawn renders with artist Jeanette Unite.

The last day students plan and execute their presentation and the week culminates in an exhibition showing how all the sites fit together to form a new park-like landscape in the former Zoo.

Who Should Attend?

This course has been designed as an intense introduction for:

- Post-graduate students from a non-design based degree who are applying for entry into to design based degrees such the Master of Urban Design (MUD).
- Applicants to other spatial and design courses and degrees (City and Regional Planning, Civil Engineering etc.) who would like to learn skills that would help them make the most of their studies.
- Professionals (including those mid / later career) who would like to develop skills in an area they have not been exposed to or may be required in their current work context.
- Other practitioners, contractors or interested parties who interface with design professionals who would like to develop an understanding of a facet of built environment design through personal experience.

Course Presenter



Albert van Jaarsveld is an architect educated at Cambridge University and currently working for SAOTA Architects in Cape Town. Albert also teaches part-time in the School of Architecture Planning and Geomatics at the University of Cape Town.

Course Overview

Name	Introduction to Spatial Design	
Dates	22 – 26 June 2026	
Venue	Centlivres Building, Upper campus, UCT	
CPD points	This course is registered with ECSA and SACAP for the award of CPD points	
Fees	Standard fee: R10 600 Student fee: R8 500	
Required equipment & stationery	Required stationery, drawing equipment and printing credits will be provided to course attendees who did not attend the DFD course in January, and is included in the cost of the course.	
Catering	Please note teas and lunches are not included in the course fees.	

*Refers to students registered for 2026

Course Assessment

Complete attendance of the entire course and passing the week's assignments will lead to the awarding of a certificate of completion. Where students are using the course as a prerequisite for entry into MUD, completion and the awarding of the certificate do not guarantee entry to these programmes.

Registration

Registration and Cancellation

- [Register for this course](#)
- Registration covers attendance of all sessions of the workshop and course materials. Please note teas and lunches are not included in the course fees. Campus catering facilities may be closed so students must please bring a packed lunch.
- Accommodation is not included in the cost of the course.
- **Registrations close on 12 June 2026.** Confirmation of acceptance will be sent on receipt of a registration form.
- **Cancellations must be received in writing by 12 June 2026. The full course fee will be charged if you have not cancelled your registration and do not arrive for the course.**
- For more information on application and registration procedures, please visit our website: www.cpd.uct.ac.za

Certificates and CPD Points

Complete attendance of the entire course and completion of the full set of assignments will lead to the awarding of a digital certificate of completion. For further information on digital certificates please visit [Digital Certificates at UCT](#). Where students are using the course as a prerequisite for entry into the MUD Programme, completion and the awarding of the certificate does not guarantee entry to this programme.

The course is registered with the Engineering Council of South Africa and SACAP, and is accredited for the award of CPD points, which are required for continuing professional registration. The ECSA course code is UCTISD26.

CPD participants can also request a formal university transcript, which will show this course as part of a Professional Development Career.

Contact details

For more information or details on CPD courses, visit our website or contact us.

Web: <http://www.cpd.uct.ac.za>

E-mail: ebe-cpd@uct.ac.za

Physical address

CPD Programme
Room 6.10, 6th Floor
New Engineering Building
Upper Campus
University of Cape Town
South Africa

Postal address

CPD Programme
EBE Faculty
University of Cape Town
Private Bag X3
Rondebosch 7701
South Africa

Programme administrators

Gillian Williams: +27 (0)21 650 7239
Sandra Jemaar: +27 (0)21 650 5793
Heidi Tait: +27 (0)21 650 4922