



FACULTY OF ENGINEERING AND THE BUILT ENVIRONMENT

EBE Vision 2050

VISION STATEMENT

- EBE is a caring and collaborative faculty. We focus on excellence, innovation and sustainability.
- We are creative, connected, inclusive, and future-fit.
- Our students and staff are experts and leaders.
- We have customised spaces, resources and support for our vision.

A special thank you to our EBE Future Dreamers Group for conceptualising EBE Vision 2050.

- Kyle Abrahams - Chemical Engineering
- Sampath Amarasinghe Danapathi Ara - Electrical Engineering
- Sherry Bremner - Chemical Engineering
- Sherlyn Gabriel - Mechanical Engineering
- Thobani Gambu - Chemical Engineering
- Obakeng Jona - Chemical Engineering
- Malibongwe Manono - Chemical Engineering
- Thato Mile - Civil Engineering
- Siphiwe Mphuthi - Architecture, Planning and Geomatics
- Amanda Mtya - Construction, Economics and Management
- Liz Musvoto - Construction, Economics and Management
- Obiora Nnene - Civil Engineering
- Justin Pead - Electrical Engineering
- Moreblessings Shoko - Architecture, Planning and Geomatics

Thank you to Dr. Craig Wing, who facilitated the group and played a key role in helping formulate the thoughts towards Vision 2050.

Vision 2050 was conceptualised using the following methods and tools to facilitate its development:

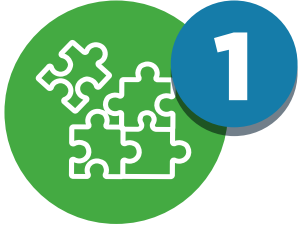
- Eisenhower Matrix (developed by Dwight D. Eisenhower) for prioritization
- Empathy Map (developed by Dave Gray) for understanding stakeholder needs
- Business Model Canvas (developed by Alexander Osterwalder and Yves Pigneur) for strategic planning
- 3 Horizons Model (developed by Bill Sharpe) for long-term visioning

IMAGINE. CREATE. SUSTAIN.

www.ebe.uct.ac.za



9 GOALS FOR THE VISION



1

We are caring and collaborative. We focus on excellence, innovation and sustainability.



6

We have spaces and resources for creative thinking.



2

Our teaching and learning is skills focussed and fundamentals driven.



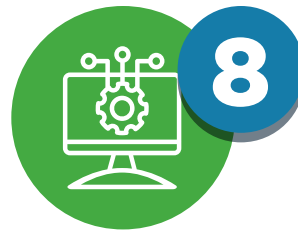
7

We have digital equality and seamless connectivity.



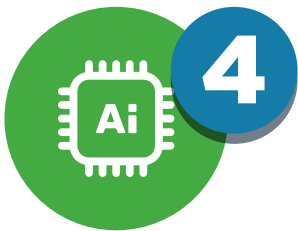
3

Our curricula are inclusive and responsive to local and global challenges.



8

We have streamlined, efficient administration systems.



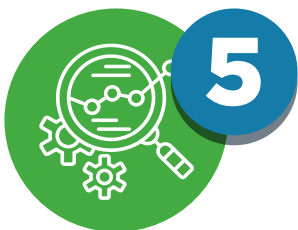
4

We offer customised learning and AI-driven solutions.



9

We are connected.



5

We are experts and leaders. We integrate research and teaching in strategic and relevant areas.





FACULTY OF ENGINEERING AND THE BUILT ENVIRONMENT



GOAL 1

We are caring and collaborative. We focus on excellence, innovation and sustainability.

- We take care of all our staff and encourage their development and growth
- We consciously mentor new staff
- We encourage and nurture inter-department collaboration and collegiality
- Excellence, innovation and sustainability are at the centre of our vision.

GOAL 2

Our teaching and learning is skills focussed and fundamentals driven.

- Our course offerings are based on fundamental principles and application of skills
- They are at the cutting edge of technology in delivery and content
- Our project-based learning supports student development.



GOAL 3

Our curricula are inclusive and responsive to local and global challenges.

- We offer an inclusive, decolonised curriculum that is responsive to student needs
- Our curricula integrate local and global perspectives
- We offer specialised programmes for local and global challenges and opportunities.



GOAL 4

We offer customised learning and AI-driven solutions.

- Our customised learning approach is adaptable to individual needs and focussed on student success
- We use AI-driven teaching and digital tools to personalise education and support lecturers
- Our coursework is aligned with students' evolving needs for lifelong learning.

GOAL 5

We are experts and leaders. We integrate research and teaching in strategic and relevant areas.

- We inspire lifelong learning
- Our students and staff lead with integrity, self-awareness and resilience
- We link theory and practice with relevant content
- We integrate research into our teaching. We involve students in research projects
- We encourage multi and cross disciplinary research towards a common goal.



GOAL 6

We have spaces and resources for creative thinking.

- Our Peer Learning Spaces encourage creativity and collaboration through the curriculum and across departmental boundaries
- Our infrastructure supports New Teaching Approaches, Cross Departmental Projects, and Extra Curricular Spaces
- We use AI-driven solutions and digital tools to enhance teaching and operations.



FACULTY OF ENGINEERING AND THE BUILT ENVIRONMENT



GOAL 7

We have digital equality and seamless connectivity.

- Staff and students have comprehensive digital access, seamless connectivity and the ability to fully participate in digital society
- The faculty has minimum laptop specs for students and they have access to the necessary software for the duration of the degree
- We have appropriate technological infrastructure and make use of digital training tools.

GOAL 8

We have streamlined, efficient administration systems.

- Our administration systems improve workflow and enhance efficiency
- Our support systems and digital platforms (SAP, PeopleSoft, Amathuba, PeopleSoft, Business Objects, DAAS analytics) support us in achieving our goals
- We incorporate evolving views on people and machines into our work
- We implement automation and AI to upskill the faculty.



GOAL 9

We are connected.

- We are globally and locally connected in both teaching and research
- We have meaningful international STEM partnerships for student exchanges and joint research
- We foster cross-cultural teaching and research opportunities.